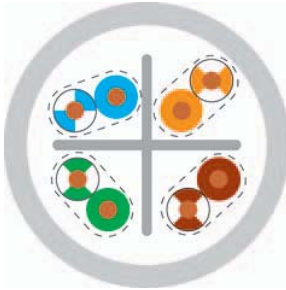


LAN-Kabel

Category 6

HELUKAT[®] 300

U/UTP FRNC

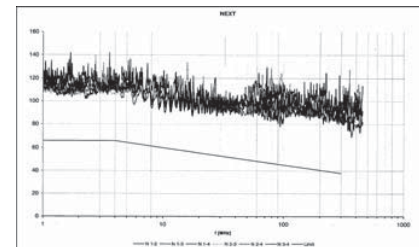


Cable structure

Inner conductor diameter:
Conductor material:
Core insulation:
Core colours:
Shielding 1:
Screen over stranding element:
Screen 1 over stranding:
Screen 2 over stranding:
Outer sheath material:
Outer diameter:
Outer sheath colour:

U/UTP 4x2xAWG 24/1 FRNC

0,55 mm
Copper, bare
PE
whbu/bu, whog/og, whgn/gn, whbn/bn
-
-
-
FRNC
approx. 6,8 mm
green, RAL 6018



Electrical data

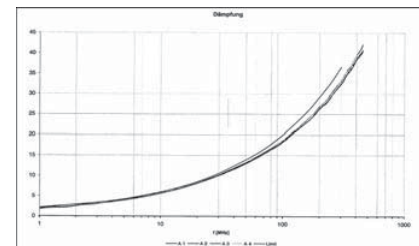
Characteristic impedance: 100 Ohm \pm 15 ohm at 1 to 100 MHz
100 Ohm \pm 20 ohm at 101 to 300 MHz
Loop resistance: 190 Ohm/km max.
Mutual capacitance: 50 nF/km nom.
Rel. propagation velocity: 67 %

Typical values

Frequency (MHz)	10	16	62,5	100	155	200	300
Attenuation (dB/100m)	5,68	7,0	14,3	18,2	22,9	26,0	32,5
Next (dB)	72	70,0	65,0	63,0	60,0	57,0	55,0
ACR (dB/100m)	66,4	63,0	50,7	44,8	37,1	31,0	22,5

Technical data

Weight: approx. 46 kg/km
bending radius, repeated: 55 mm
Operating temperature range min.: -20°C
Operating temperature range max.: +60°C
Caloric load, approx. value: 0,68 MJ/m
Copper weight: 20,00 kg/km



Norms

Acc. to ISO/IEC 11801, Acc. to EN 50173, Acc. to EIA/TIA 568-B-2-1, Category 6, IEC 61156-5
Flame-retardant acc. to IEC 60332-3, Smoke density acc. to IEC 61034, IEC 60754-2

Anwendung

HELUKAT[®]300 data cables are used in the tertiary, but also in the secondary level of a network. They are characterized by large performance reserves and outstanding performance. They can be used to implement services such as Gigabit Ethernet, Fast Ethernet, Ethernet, TM155, FDDI, token ring 4/16 Mbit/s, or ISDN absolutely trouble-free. Likewise, the mechanical characteristics are perfectly suited for the application in tight cable channels and platforms due to their optimized construction.

Part no.

804766, U/UTP 4x2xAWG24/1 FRNC

Dimensions and specifications may be changed without prior notice.